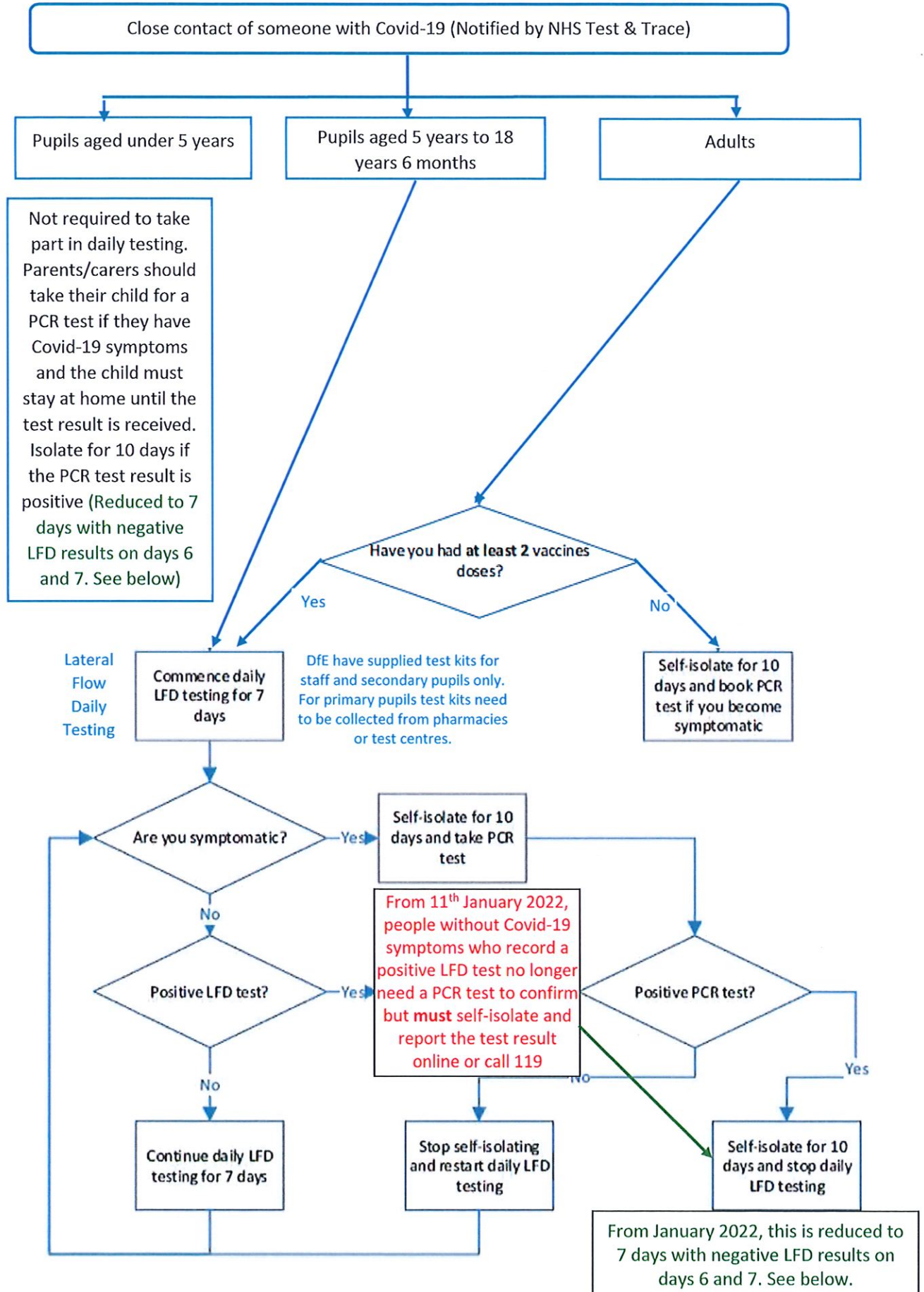


Self-isolation and testing requirements in schools from 11/01/22



Ending self-isolation early using LFD tests

UK Health Security Agency

New 7 day self-isolation rules

The self-isolation period for people who have tested positive for COVID-19 has been reduced in most cases



1. If you test positive for COVID-19 you must self-isolate for up to 10 days



2. Take an LFD on day 6 of your isolation and another 24 hours later on day 7



3. If both tests are negative and you have no symptoms, you may end your self-isolation after the second negative test result

