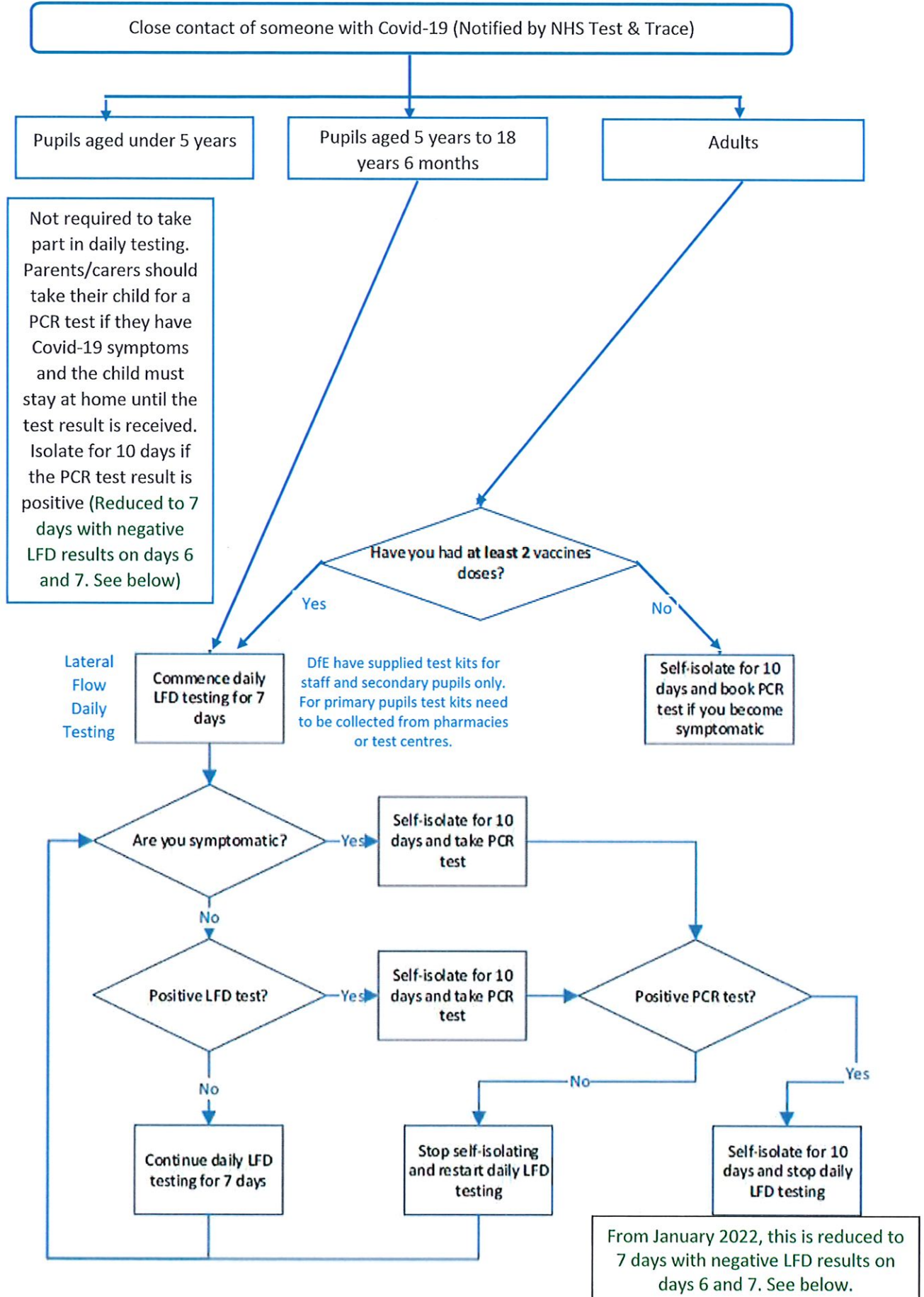


Self-isolation and testing requirements in schools from 04/01/22



Ending self-isolation early using LFD tests

UK Health Security Agency

New 7 day self-isolation rules

The self-isolation period for people who have tested positive for COVID-19 has been reduced in most cases



If you test positive for COVID-19 you must self-isolate for **up to 10 days**



Take an LFD on **day 6** of your isolation and another **24 hours later on day 7**



If both tests are negative and you have no symptoms, **you may end your self-isolation after the second negative test result**

